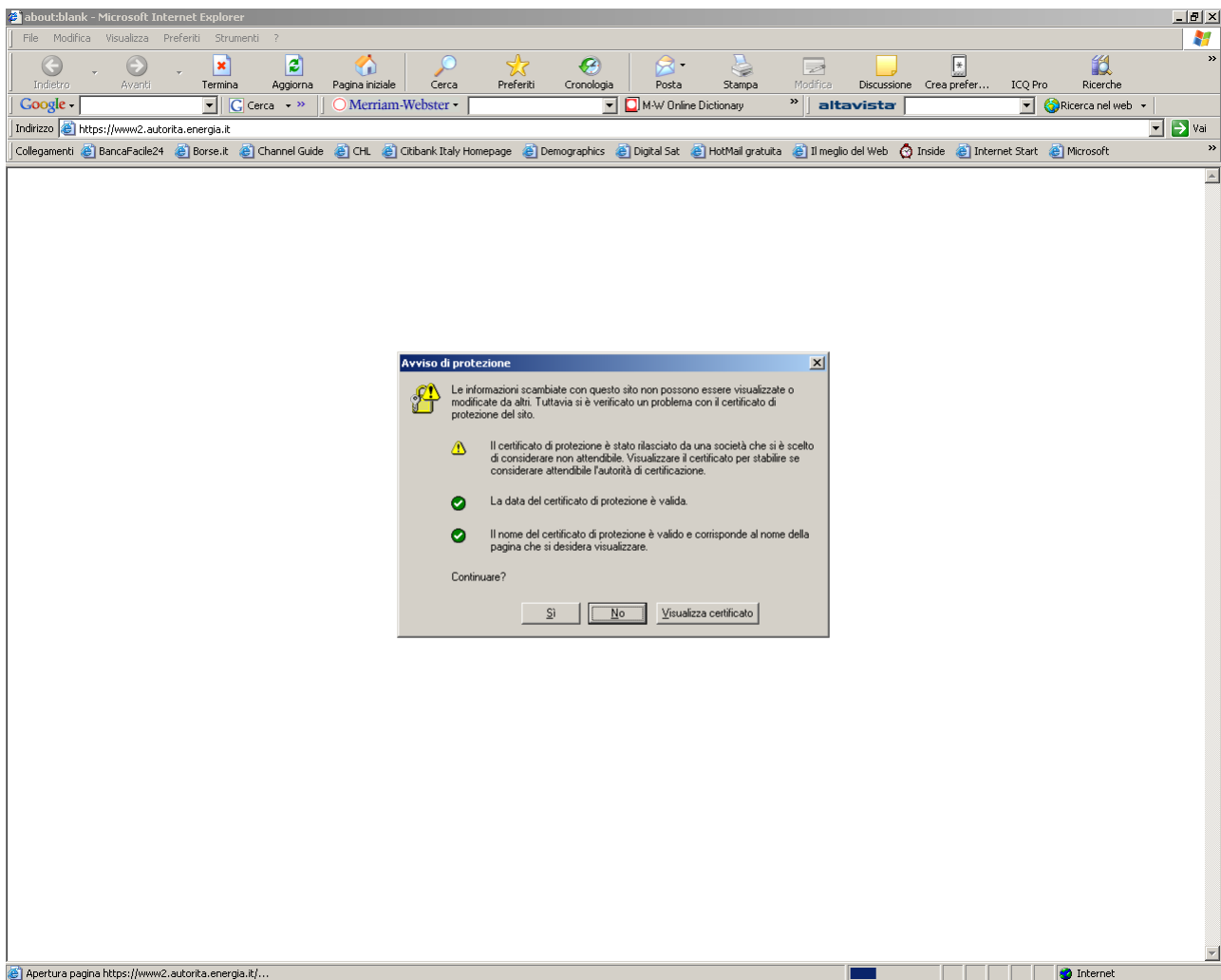
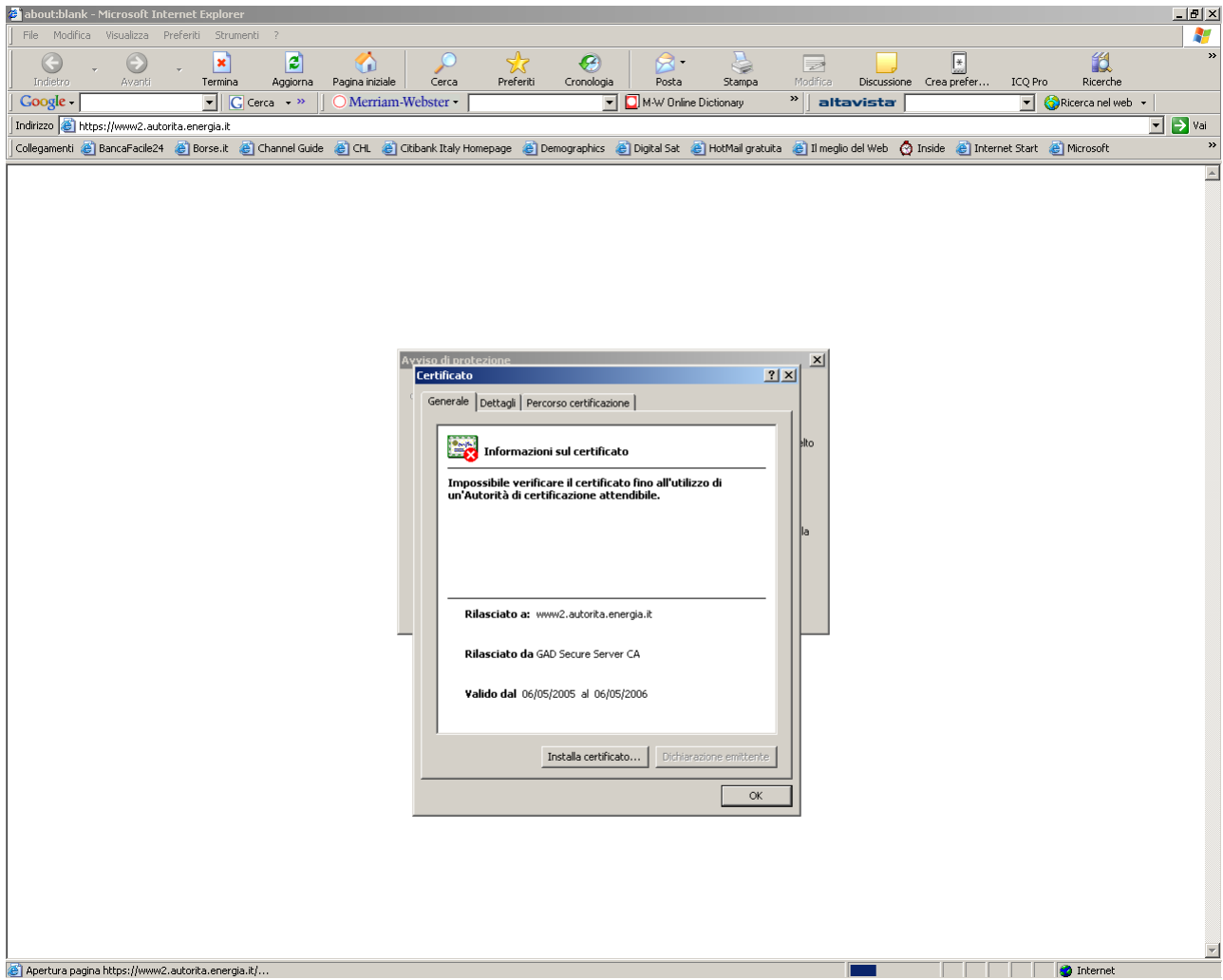


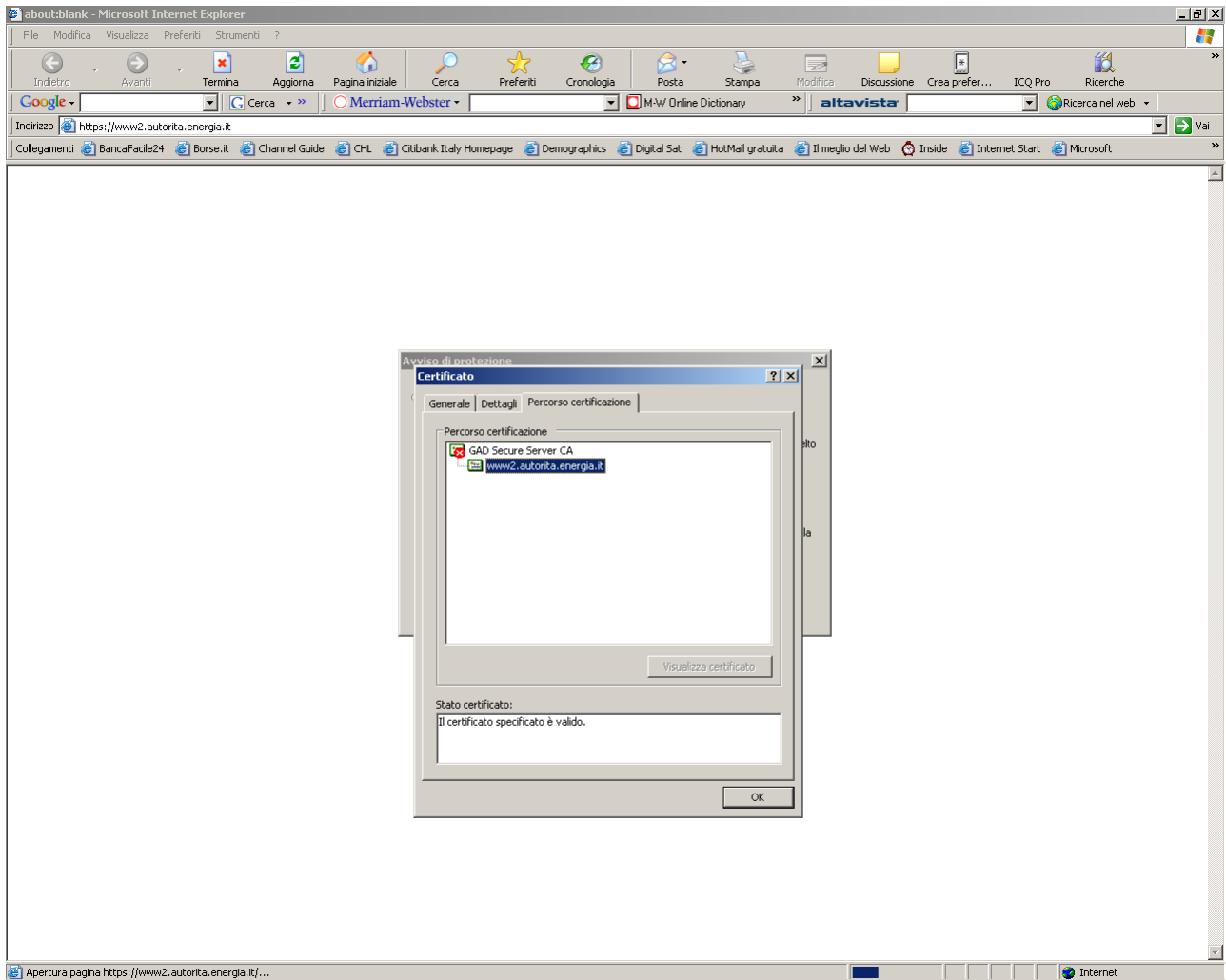
Collegarsi a uno dei siti che presentano il problema (ad esempio www2):



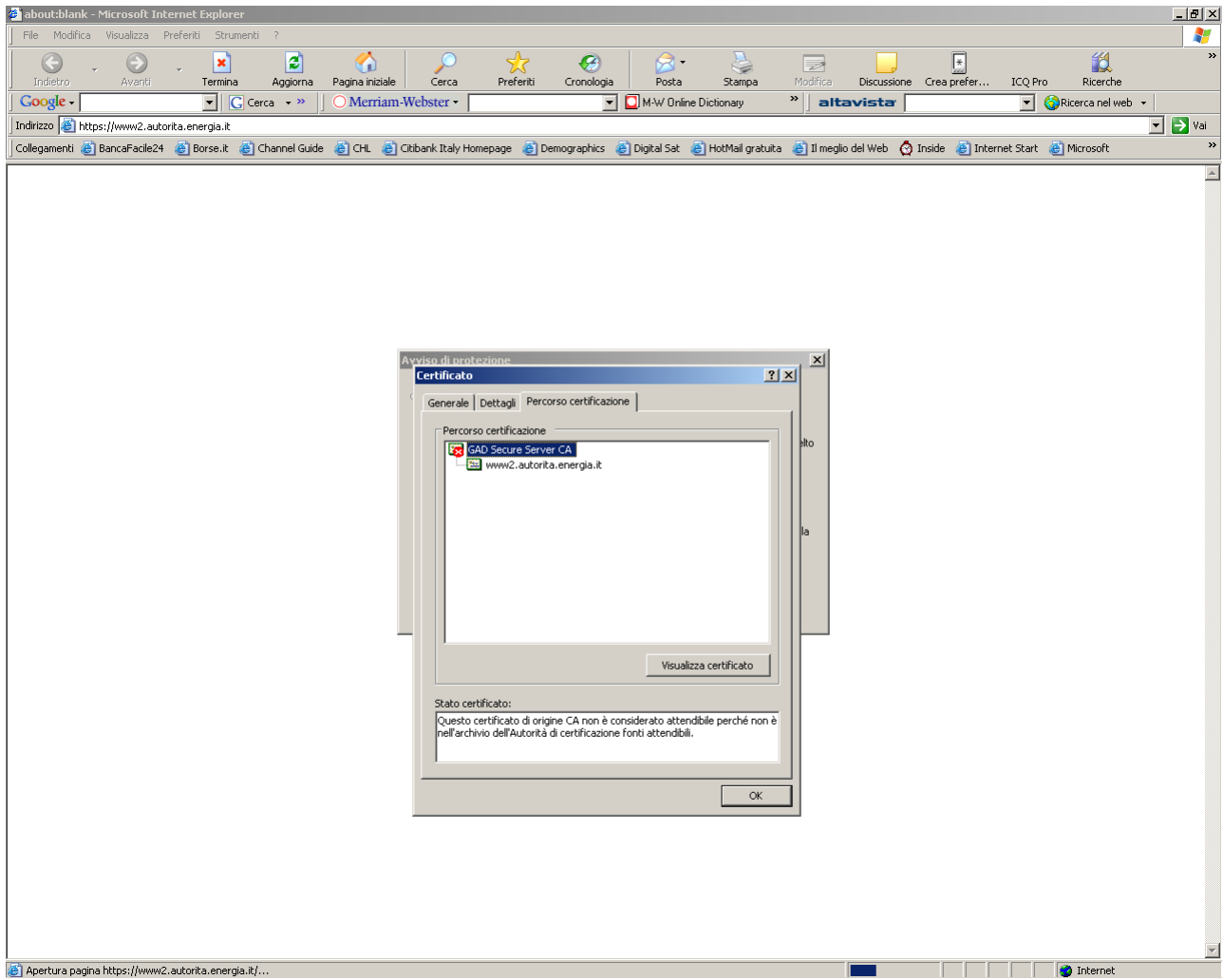
Scegliere "Visualizza certificato"



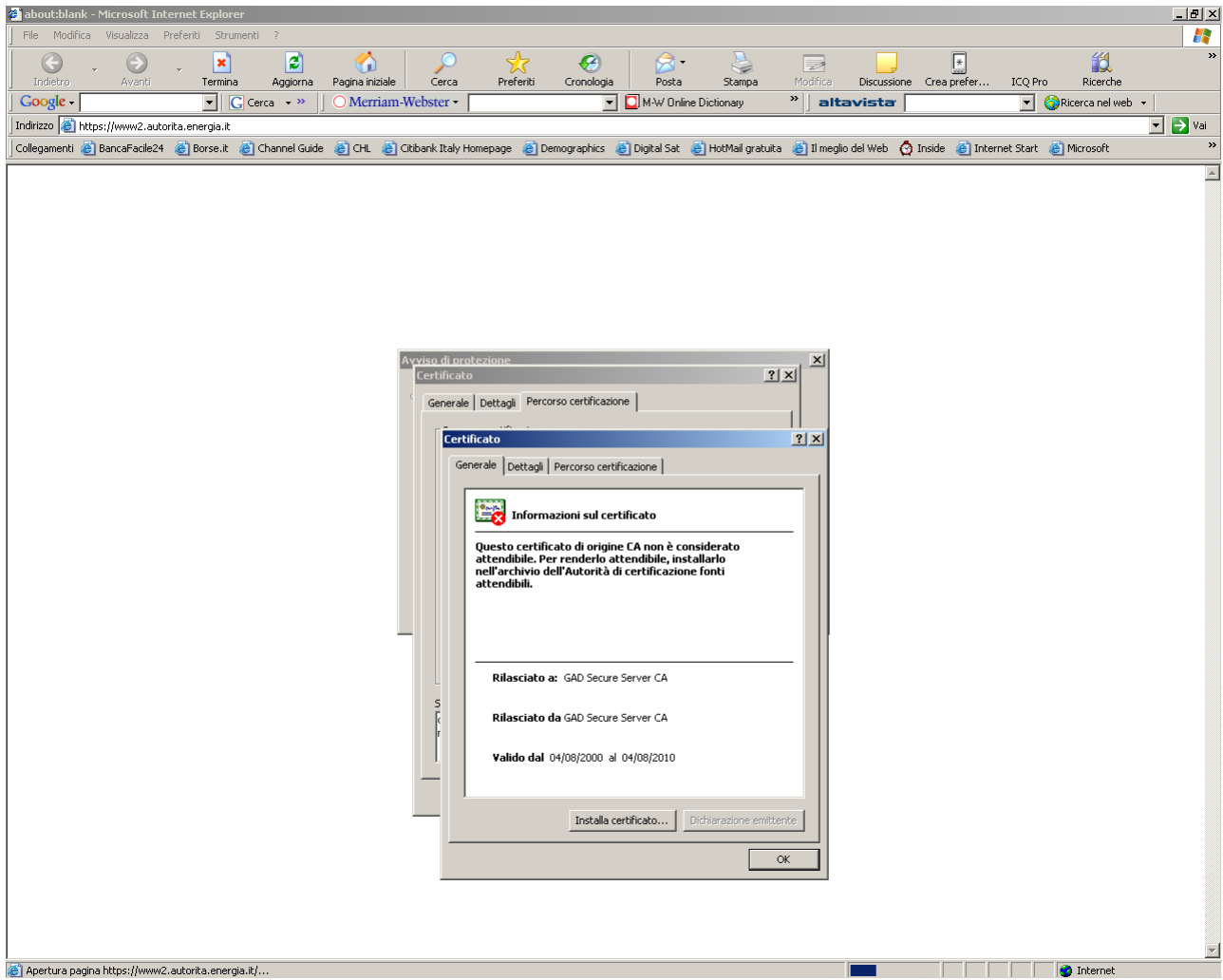
Scegliere la sezione “Percorso certificazione”



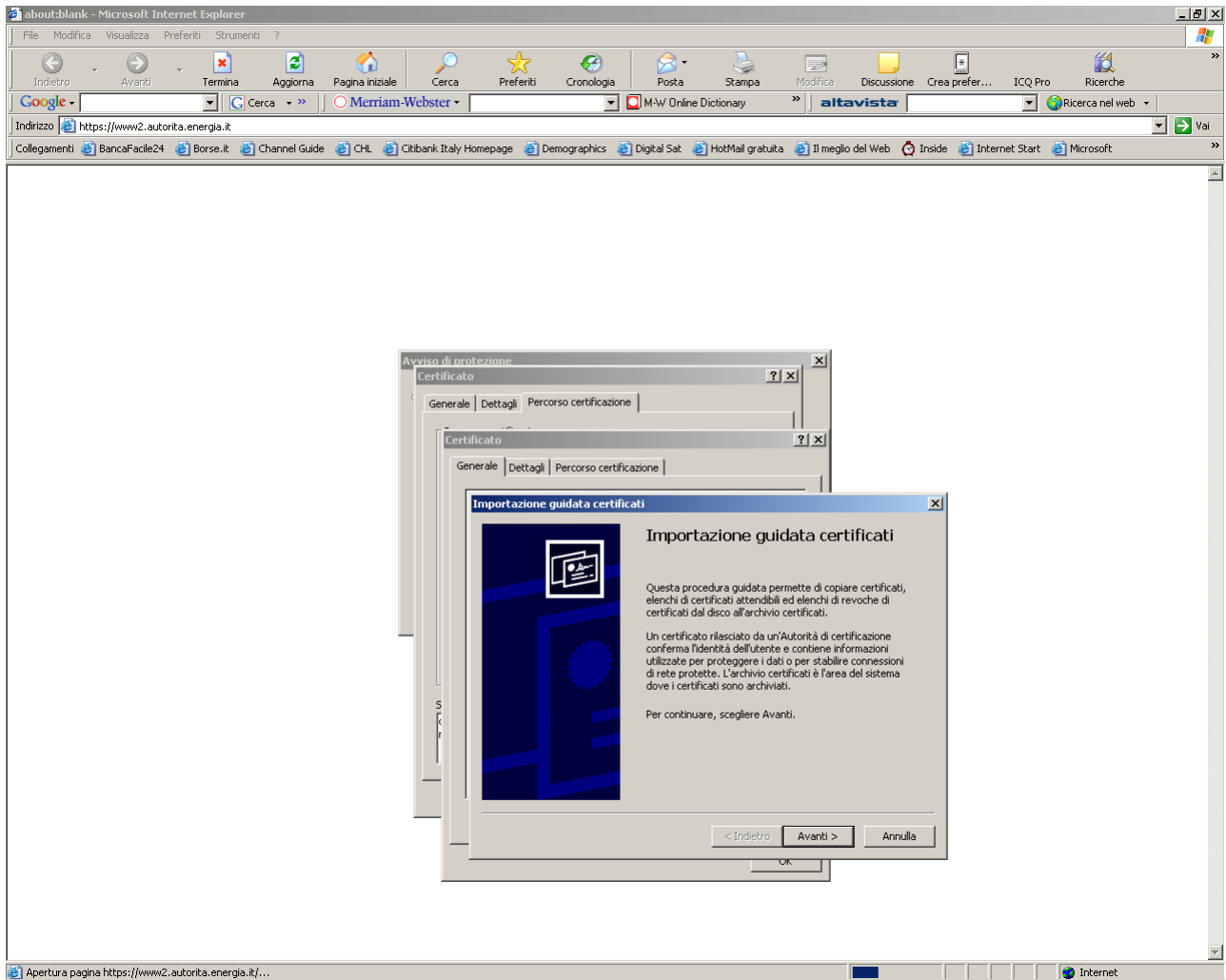
Selezionare GAD Secure Server CA



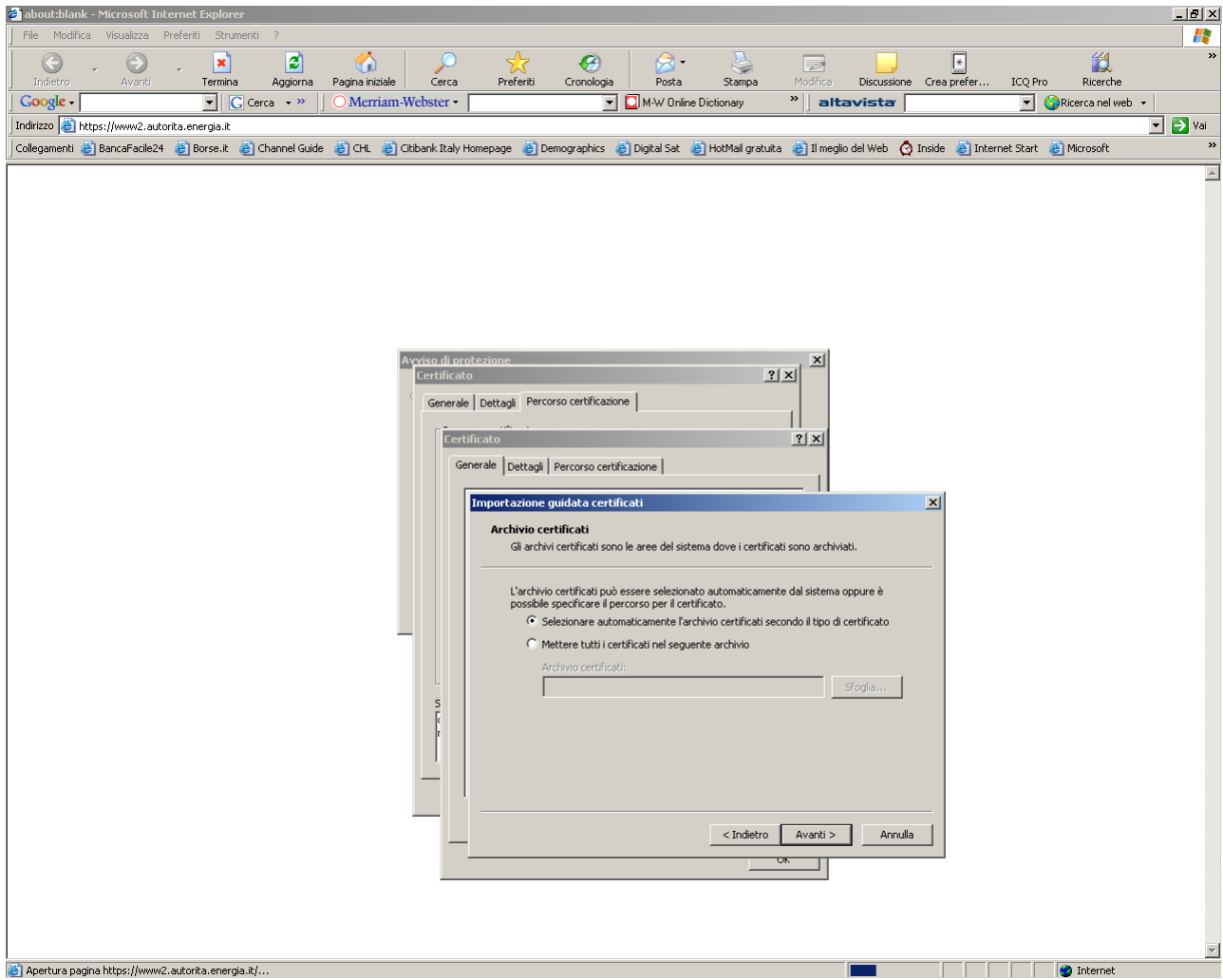
Selezionare “Visualizza certificato”



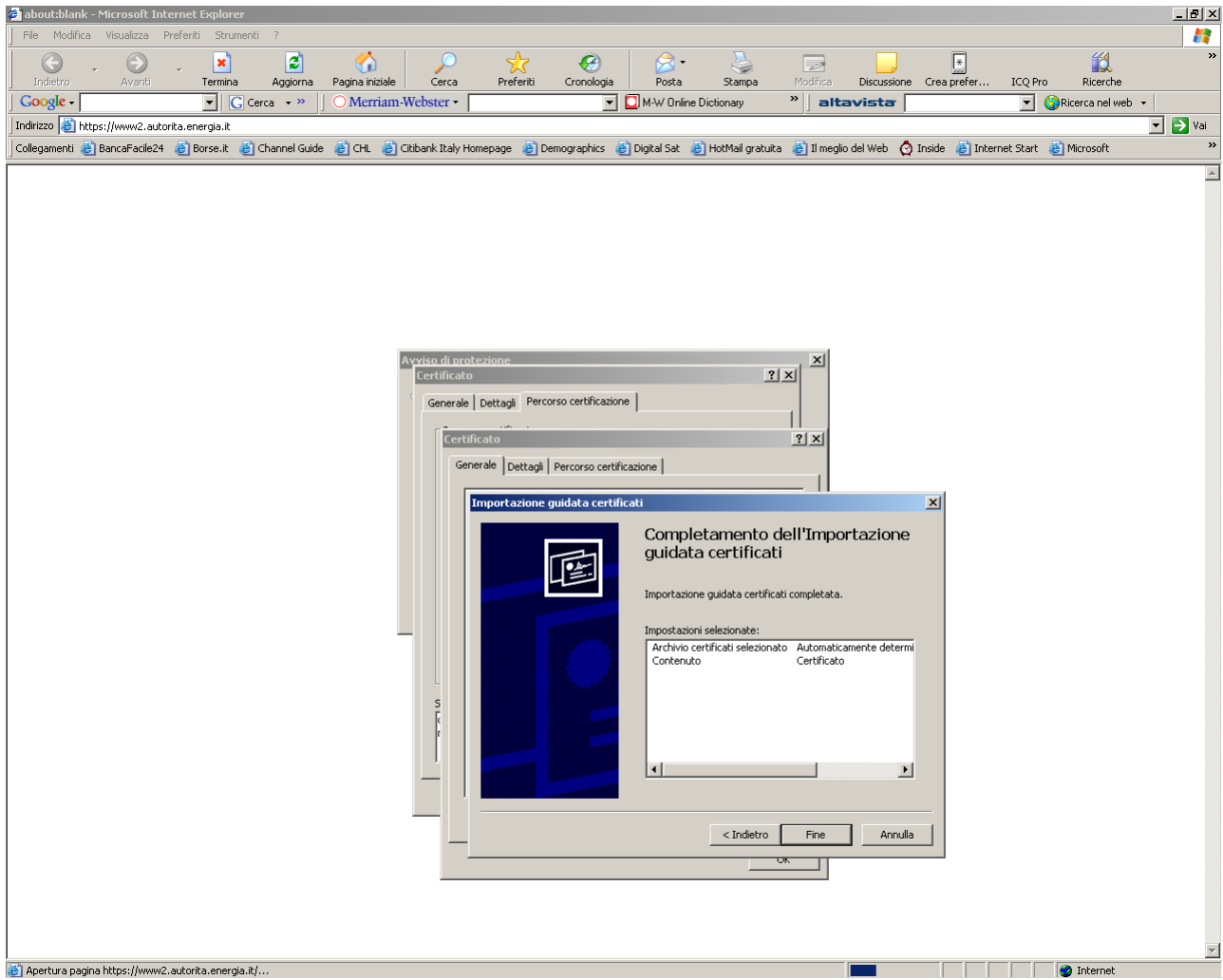
Selezionare “Installa certificato”



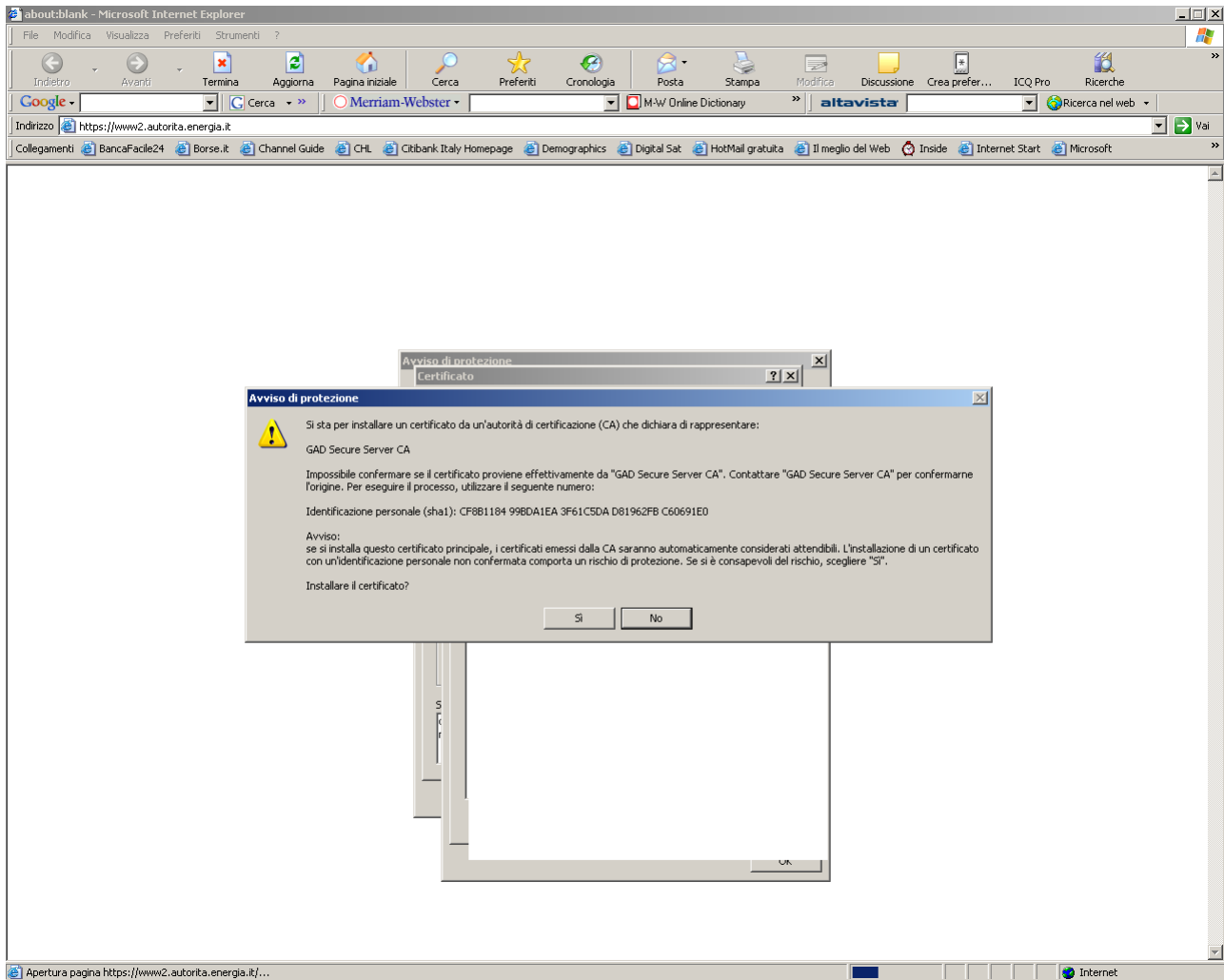
Selezionare "Avanti>"



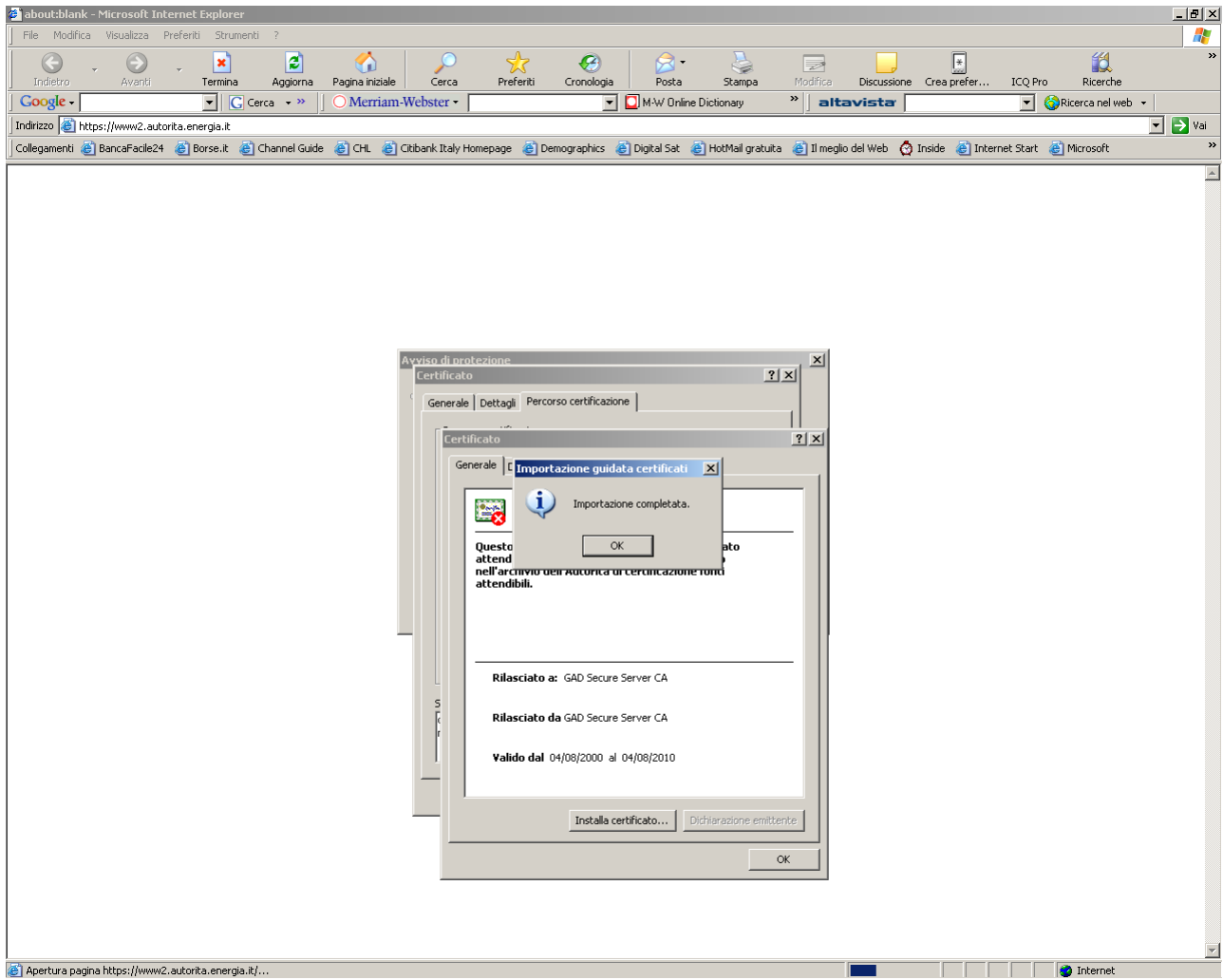
Selezionare “Avanti>”



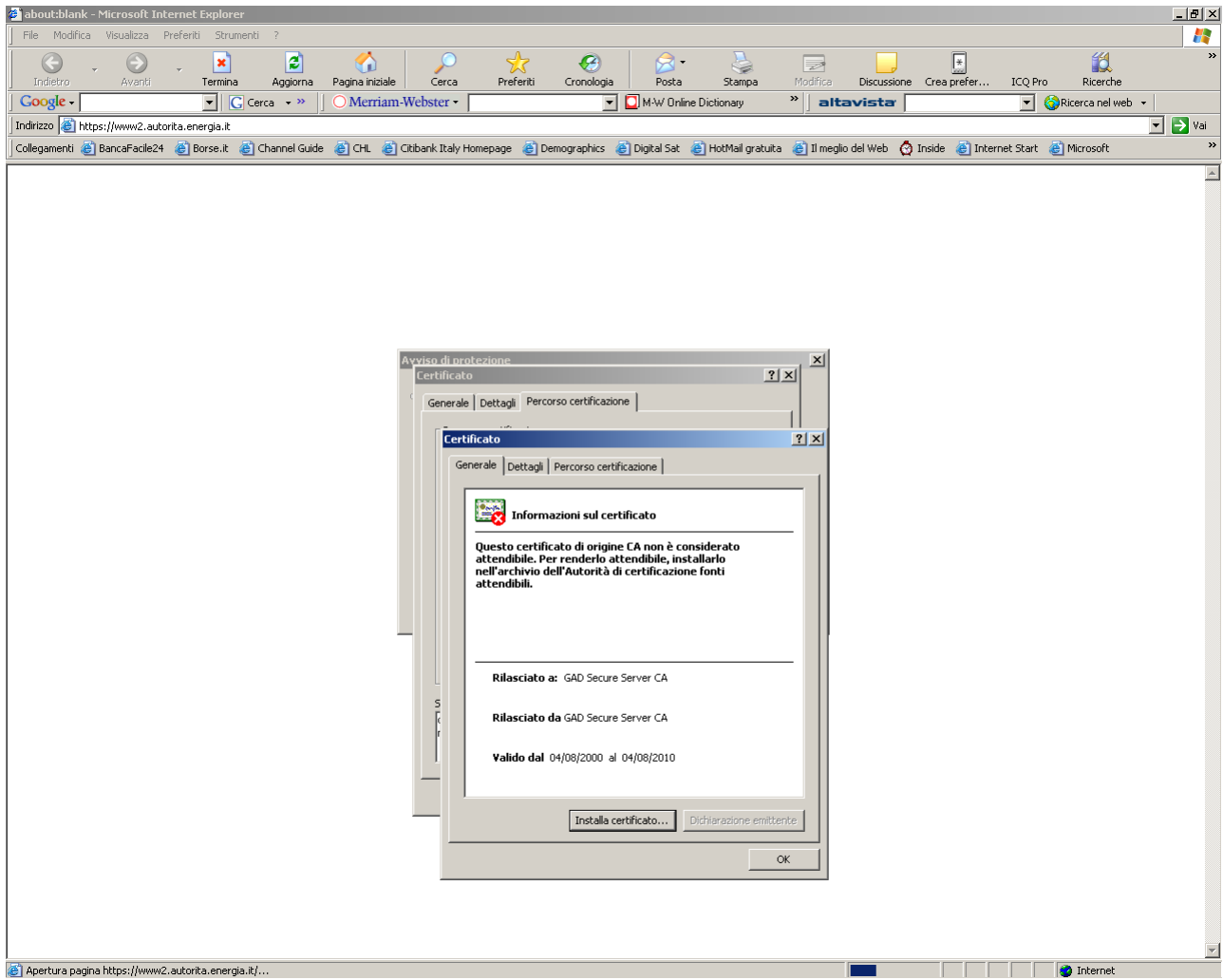
Selezionare "Fine"



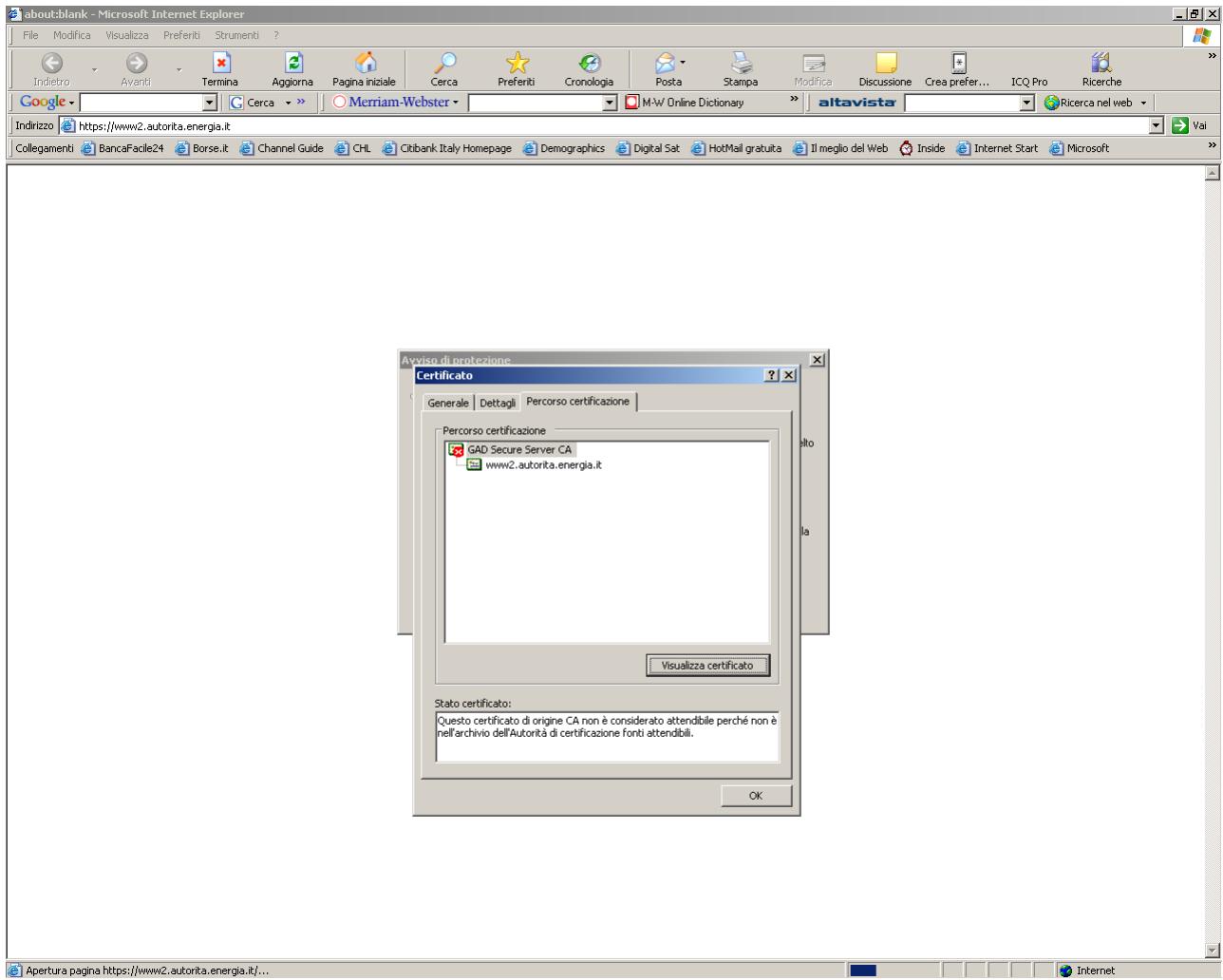
Selezionare "Sì".



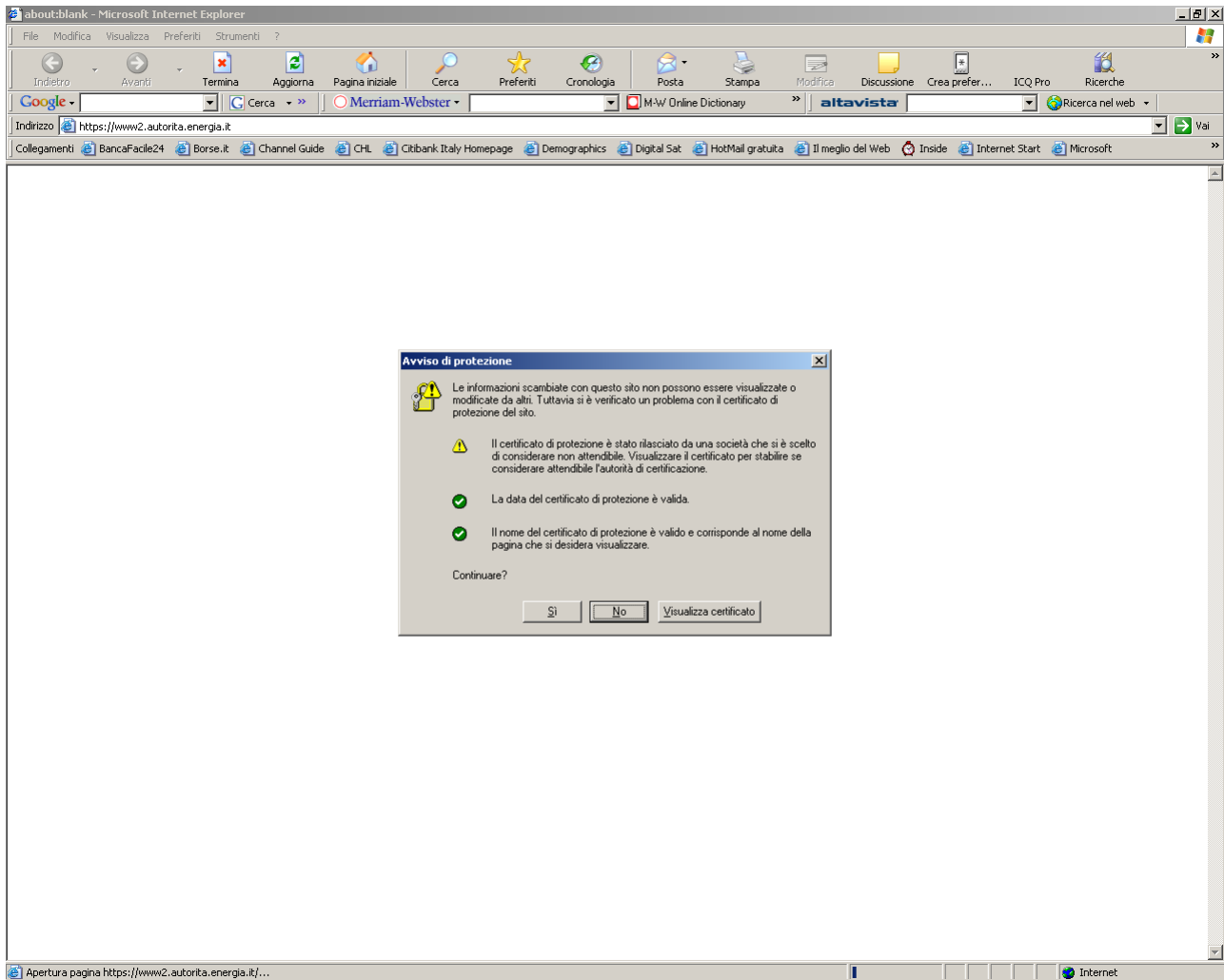
Selezionare "Ok".



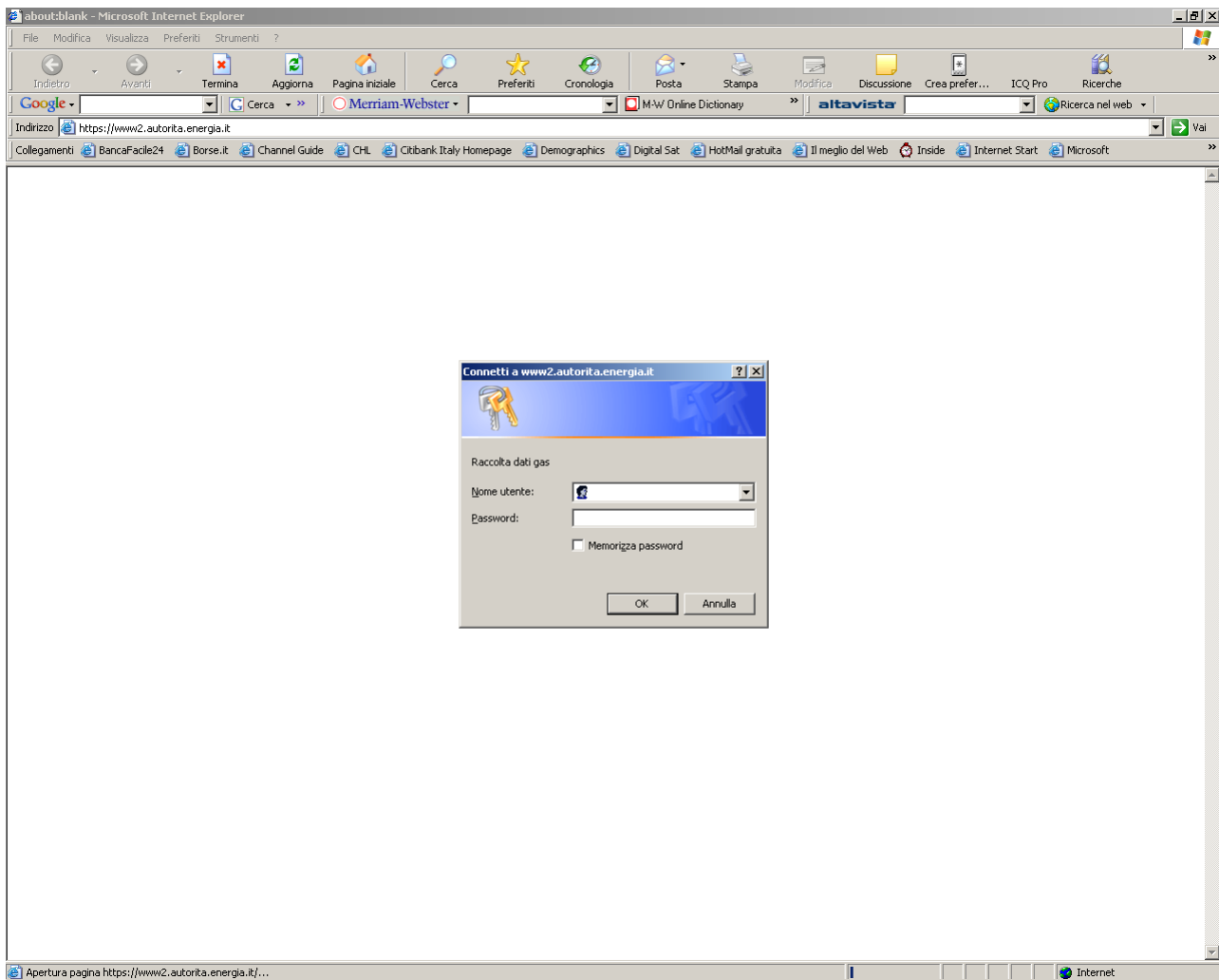
Selezionare "Ok".



Selezionare "Ok".



Scegliere “No”, chiudere e riaprire il browser; a questo punto il risultato è il seguente:



In pratica si è aggiunta la Certification Authority CINECA (GAD Secure Server CA) tra quelle attendibili; in questo modo non dovrebbero più presentarsi i problemi indicati, poiché tutti i certificati emessi sono attribuiti ad una CA indicata come attendibile.